



The Laurels | Rugeley | WS15 1BE  
Offers In The Region Of £160,000



## Summary

\*\* NO CHAIN \*\* OVER 60'S WARDEN CONTROL ACCOMMODATION \*\* TWO BEDROOMS \*\* BATHROOM \*\* LIVING ROOM \*\* KITCHEN \*\* CLOSE TO CAR PARK \*\* VIEWING ADVISED \*\*

WEBBS ESTATE AGENTS are pleased to market this two bedroom mid terraced bungalow, located on the ever popular warden controlled development of The Laurels.

The property is available to the over 60s only. Viewing of the bungalow is highly advised to appreciate the accommodation on offer. Located close to amenities, useful transport links and a short distance to Rugeley Town Centre.

The property also has the benefit of being on the flat and close to the car park.

The internal accommodation briefly comprises; entrance hallway, living room, kitchen, two bedrooms and a bath room. The property also benefits from a communal garden and car park.

## Key Features

- NO CHAIN
- TWO BEDROOMS
- LIVING ROOM
- CLOSE TO CAR PARK
- OVER 60'S WARDEN CONTROL ACCOMMODATION
- BATHROOM
- KITCHEN
- VIEWING ADVISED

## Rooms and Dimensions

### Entrance Hallway

### Kitchen

7'8" x 11'5" (2.34 x 3.49)

### Lounge

12'8" x 14'3" (3.88 x 4.35)

### Bedroom One

9'6" x 10'5" (2.92 x 3.18)

### Bedroom Two

10'8" x 6'0" (3.27 x 1.84)

### Bathroom

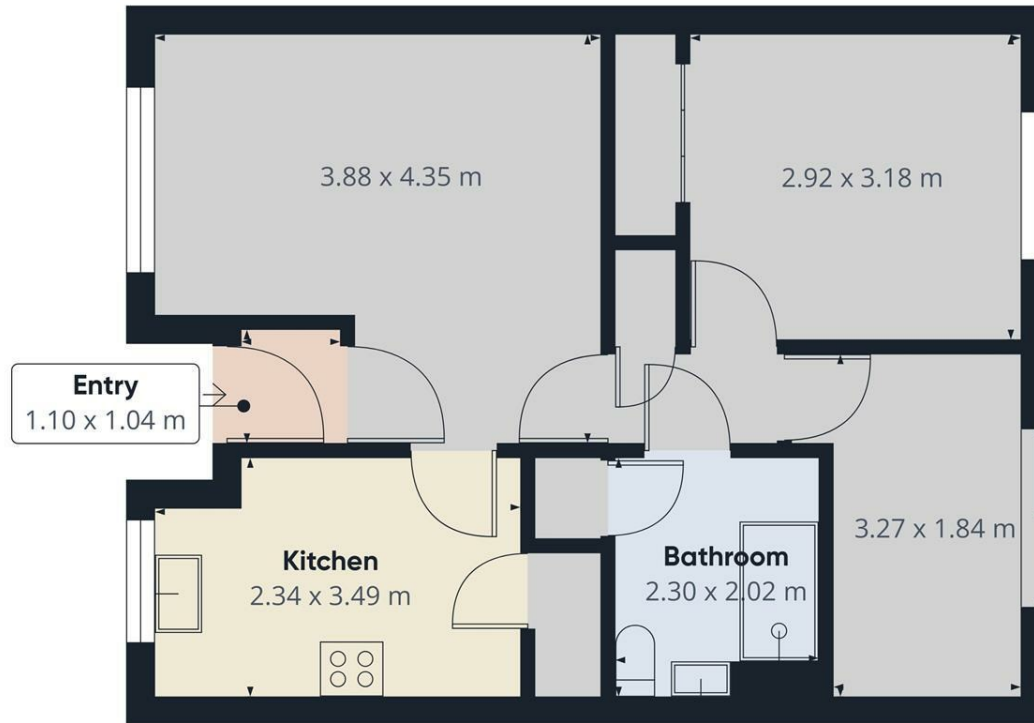
7'6" x 6'7" (2.30 x 2.02)

### IDENTIFICATION CHECKS - C

### Agents Notes





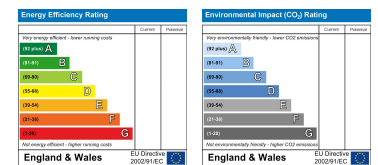


Approximate total area<sup>(1)</sup>  
49 m<sup>2</sup>

(1) Excluding balconies and terraces

Calculations reference the RICS IPMS 3C standard. Measurements are approximate and not to scale. This floor plan is intended for illustration only.

GIRAFFE360



Webbs Estate Agents - endeavour to maintain accurate depictions of properties in Virtual Tours, Floor Plans and descriptions, however, these are intended only as a guide and purchasers must satisfy themselves by personal inspection.